



*Information on new KAMA PRO
all-steel truck tire models*

KAMA TYRES

EXPERTISE. CONFIDENCE. LEADERSHIP



NF 203



NR 203



NT 203

KAMA PRO is a new generation all steel tire line, which predominantly includes models with bead seat diameter of 22.5 inches. The products are designed to complete vehicles involved in regional and long-haul transportation. The main distinguishing feature is the increased service life - tire running life increased by **20%** due to structure optimization and use of a new formulation of the rubber compound.

KAMA PRO NF 203 – is a range of steering axle tires for trucks and buses for use mainly on regional highways.



Tire model	Size	Load index	Speed rating	Speed max.	Maximum permissible load, kg		Additional marking
					Single wheel	Dual wheel	
KAMA NF 202	315/70R22,5	<u>154/150</u> 152/148	<u>L</u> M	<u>120</u> 130	<u>3 750</u> 3 550	<u>3 350</u> 3 150	M+S, 3PMSF
KAMA PRO NF 203	315/70R22.5	<u>156/150</u> <u>154/150</u>	<u>L</u> M	<u>120</u> 130	<u>4000</u> <u>3750</u>	<u>3350</u> 3350	M+S, 3PMSF

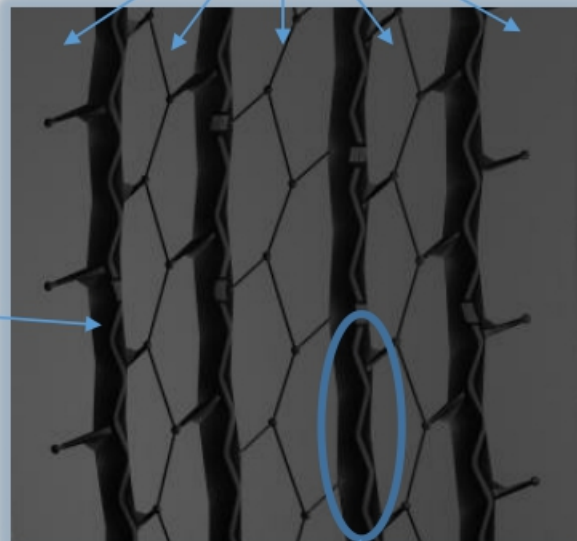
154/150 – main operation mode

152/148 – additional operation mode

Due to the design change and use of new materials, the novelty can withstand heavy loads (4000 kg) at the same speed, as opposed to the previous models (3750 kg).

New formulations of rubber compound were applied in respect of Kama PRO tires, reducing tire weight by 1,5 % that leads to fuel consumption reduction

5 circumferential blocks for improved straight line rolling



Increased width of the grooves to remove water from the contact patch more efficiently



KAMA PRO NR 203 – is a range of driving axle tires for trucks and buses for use mainly on regional highways.

Tire model	Size	Load index	Speed rating	Speed max.	Maximum permissible load, kg		Additional marking
					Single wheel	Dual wheel	
Kama PRO NR 203	315/70R22.5	<u>154/150</u> <u>152/148</u>	<u>L</u> <u>M</u>	<u>120</u> <u>130</u>	<u>3750</u> <u>3550</u>	<u>3350</u> <u>3150</u>	M+S, 3PMSF

The mileage was increased due to improved stress distribution in the contact patch, which ensures uniform tire wear across the entire width of the tread section and increases the tire life by **20%** (in contrast to serial Kama tires). This, in turn, increases the efficiency of transport use and reduces the costs of the transport company, which receive an additional economic advantage.

Reinforced shoulder area for improved acceleration and braking performance

The tread pattern blocks and grooves are of a complex shape that contributes stone removing and enhances traction in the rain and wet snow.



KAMA PRO NT 203 - is a range of tires for trailers and vans for use mainly on regional highways.



Tire model	Size	Load index	Speed rating	Speed max.	Maximum permissible load, kg		Additional marking
					Single wheel	Dual wheel	
KAMA NT 201	385/65R22,5	160	K	110	4500	-	-
KAMA PRO NT 203	385/65R22,5	164	K	110	5000	-	M+S, 3PMSF

Due to the design change the tire withstands heavy loads (5000 kg) at the same speed, as opposed to the previous models (4500 kg).

Central and middle block area is separated by 3D sipes for better grip while braking and to avoid sideways skidding in the rain and wet snow.



Stone ejectors are located along the bottom of the outer grooves

Wide grooves contribute to a better water drainage from the contact patch.

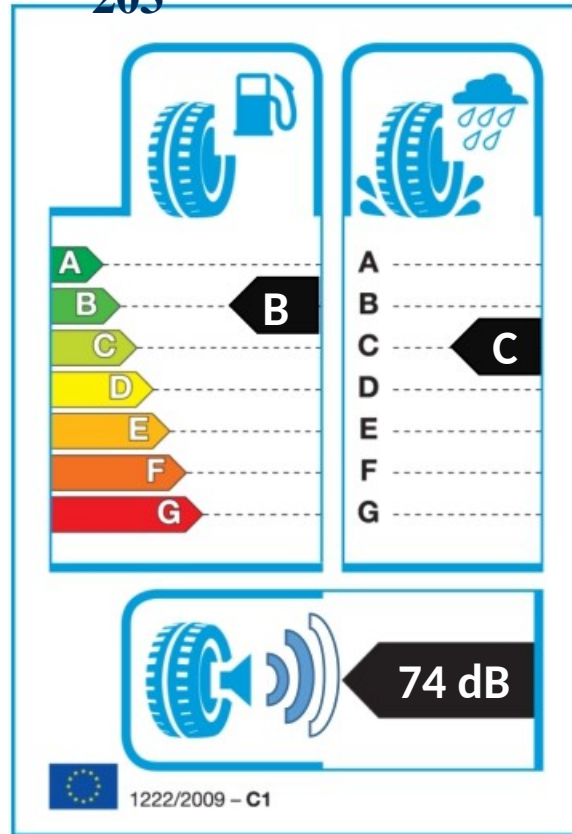
Tire model	Size	Load index	Speed rating	Speed max.	Load, kg		Additional marking	Start of serial production (month, year)
					Single wheel	Dual wheel		
KAMA PRO NF 203	295/80R22.5	<u>152/148</u> 154/149	<u>M</u> L	<u>130</u> 120	<u>3550</u> 3750	<u>3150</u> 3250	M+S, 3PMSF	August (2019)
		156/150 154/150	<u>L</u> M	120 130	4000 3750	3350 3350		
	315/70R22,5	156/150 154/150	<u>L</u> M	<u>120</u> 130	<u>4000</u> 3750	<u>3350</u> 3350	M+S, 3PMSF	January (2019)
KAMA PRO NR 203	295/80R22.5	<u>152/148</u> 154/149	<u>M</u> L	<u>130</u> 120	<u>3550</u> 3750	<u>3150</u> 3250	M+S, 3PMSF	August (2019)
	315/70R22,5	<u>154/150</u> 152/148	<u>L</u> M	<u>120</u> 130	<u>3750</u> 3550	<u>3350</u> 3150	M+S, 3PMSF	January (2019)
	315/80R22,5	<u>156/150</u> 154/150	<u>L</u> M	<u>120</u> 130	<u>4000</u> 3750	<u>3350</u> 3350	M+S, 3PMSF	May (2019)
KAMA PRO NT 203	385/65R22,5	164	K	110	5000	-	M+S, 3PMSF	July (2019)

KAMA PRO tire range

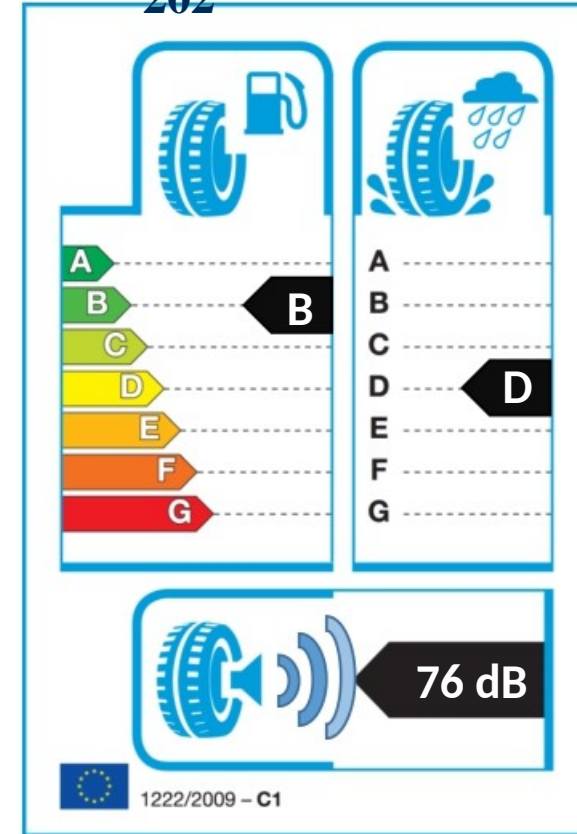
KAMA TYRES

EXPERTISE. CONFIDENCE. LEADERSHIP

315/70R22,5
KAMA PRO NR
203



315/70R22,5
KAMA NR
202



Through the application of new design concept and rubber compounds, wet grip and external noise performance have been improved.